

# WHAT IS TMS AND HOW DOES IT WORK?

---

- Transcranial Magnetic Stimulation (TMS) is an office-based procedure cleared by the FDA in 2008 for the treatment of Major Depression.
- An MRI-strength magnet is used to stimulate an area of the brain thought to control mood.
- Non-invasive and non-systemic.
- No anesthesia or sedation is required.
- The patient sits in a comfortable chair during the procedure
- Magnetic pulses are administered to the patient resulting in:
  - The release of neurotransmitters
  - Increased blood flow to the brain
  - Other positive clinical effects.
- The patient can resume normal activities following their treatments.
- Treatments are administered 5 days a week for 6 weeks, then a 3-week taper phase.
- A typical course of TMS would be a total of (36) 19-minute sessions

---

**Covered by Most Insurance Plans**



---

**Remission is Possible**

**CONTACT US NOW**

**A Child and Family Psychiatry**

750 Cross Pointe Road, Suite D  
Gahanna, OH 43230  
(614) 768-2700

---

[psychiatristcolumbusoh.com](http://psychiatristcolumbusoh.com)



# TMS THERAPY FOR DEPRESSION



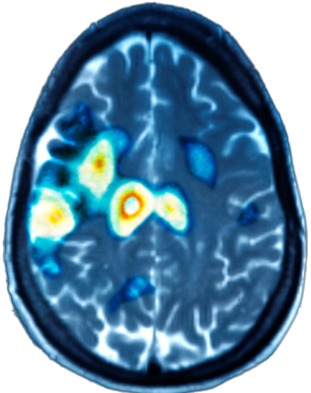
**We Now Have the Technology  
to Treat Your Depression**

**Covered by Most Insurance Plans**

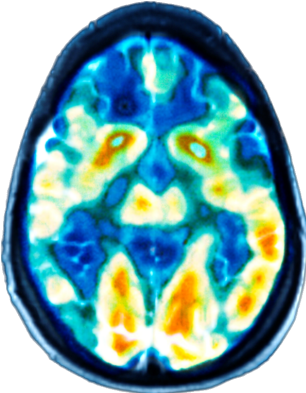
# Depression Starts In The Brain

Depression is caused by reduced activity in the areas of the brain thought to regulate mood.

**Depressed**

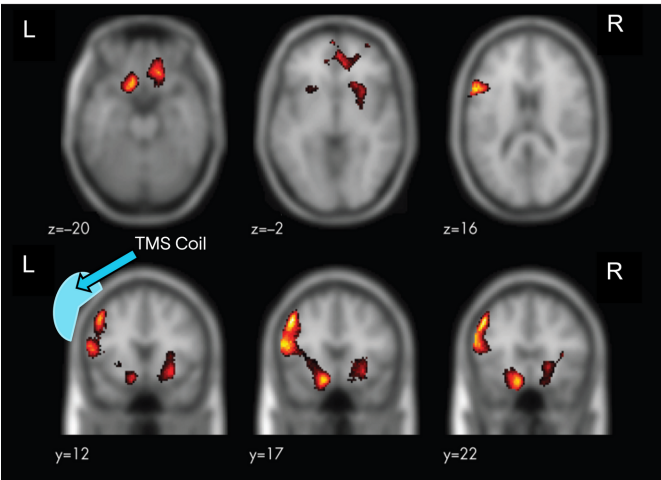


**Non-Depressed**



PET Scan showing the activity of a depressed brain vs a non-depressed brain

# TMS Increases Brain Activity



Functional MRI showing the new activity post TMS treatment in 6 cross section scans

# Which Patients Qualify for TMS?



If you have tried 2 or more antidepressant medications and have not experienced relief from your symptoms of depression, then TMS may be the next choice of treatment options to feeling well again.

- TMS was cleared by the FDA in 2008
- Each session lasts 19 minutes
- 1 session per day Mon. thru Fri.
- 36 Total sessions
- Patients can drive themselves to and from each appointment and resume normal activities after each treatment.
- TMS uses an MRI strength magnet to stimulate parts of the brain that have become inactive during depression
- Over 5 million TMS procedures have been performed worldwide since 2008



# Safe and Well Tolerated

- Considered safe and well-tolerated.
- No adverse effects on sleep, memory, or cognition.
- No anesthesia or sedation required
- TMS is non-systemic and does not travel through the body like medication.
- The most common side effects are mild to moderate headaches, which can usually be treated with over-the-counter pain medication. Scalp discomfort or pain at the treatment site, lightheadedness, or tingling in the face or limbs.
- These side effects are usually temporary and resolve within a few hours after the treatment.